

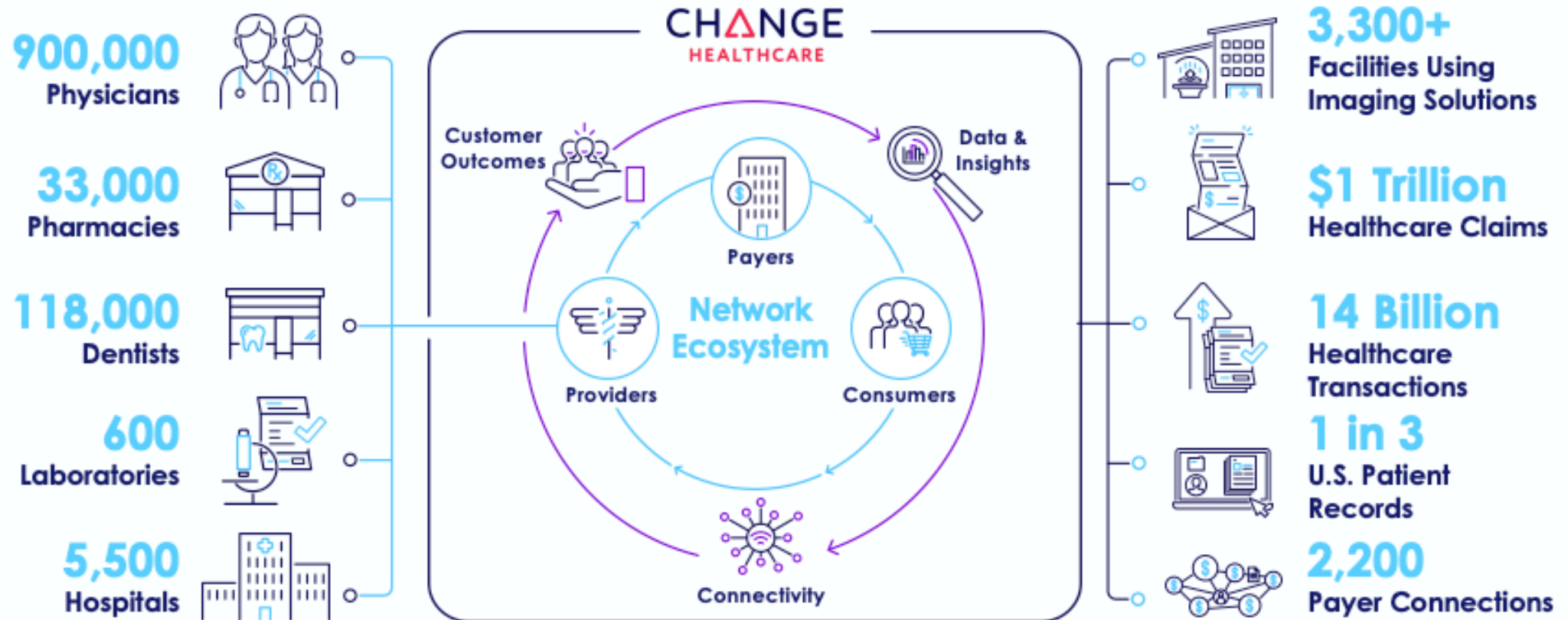


INTRODUCTION TO CHANGE HEALTHCARE

Matter – Change Healthcare Pitchfest

Unparalleled Reach Across The Healthcare Ecosystem

One of the largest healthcare financial and administrative networks in the United States

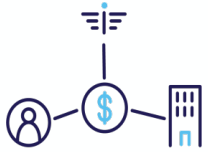


Leading analytics solutions

Pervasive network providing insights

Leading payer and provider relationships

Helping Customers Address Key Industry Trends



Wasteful Spending

U.S. NHE will grow from \$3.5T to \$5.7T by 2026.
Waste accounts for ~30% of this spend.



Growth in High-Risk Populations

65+ population growing 34% with **3-5x spend** vs younger population.



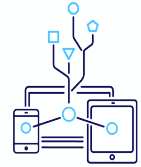
Shift to Value-based Care

Care delivery models shifting to incentivize value and quality



Increasing Consumerism

HDHPs have grown **12%** annually since 2012



Proliferation of Healthcare Data

Unprecedented rise in HC data (**>2,300** exabytes by 2020)



Reduce and Control Costs



Increase Cash Flows



Manage complex workflows



Streamline Engagement



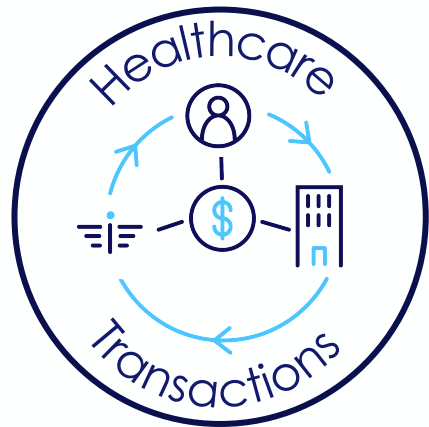
Enable data interop and Insights

Source: Source: National Academy of Medicine; Office of the Actuary; U.S. Census Bureau; Congressional Budget Office; America's Health Insurance Plans; Centers for Medicare & Medicaid Services

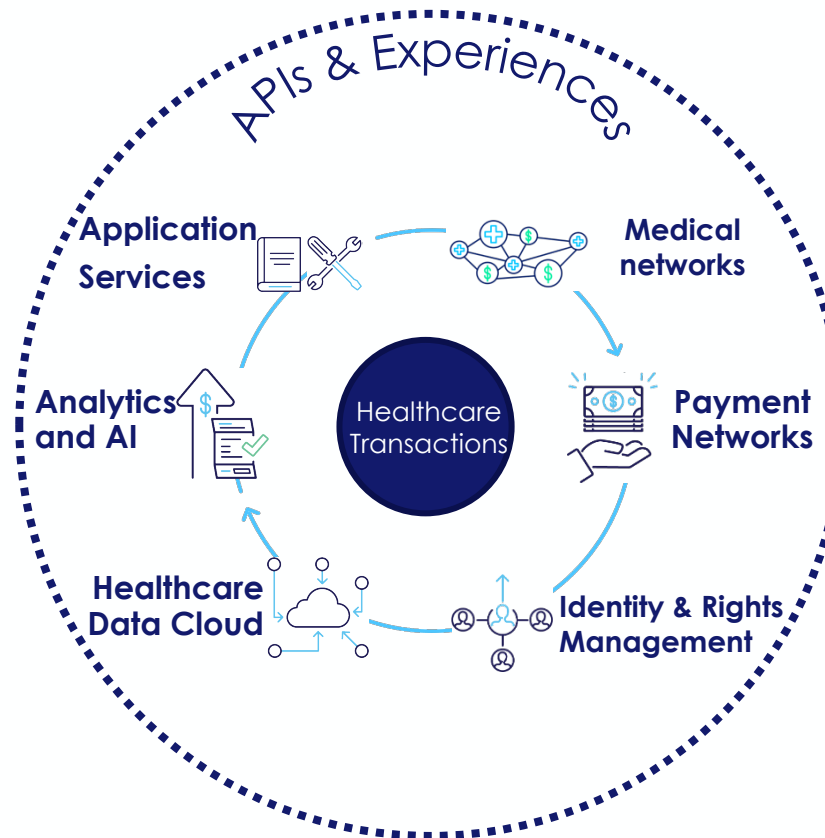
The Leading Healthcare Financial Management Platform

Informed by Clinical Insights

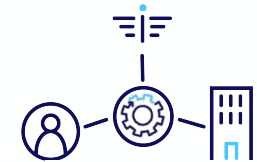
Customer Needs



Intelligent Healthcare Platform™



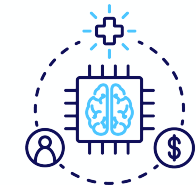
Go-to-Market



Solutions and Services for Patient, Provider, and Payer



API Products powering the Healthcare Ecosystem

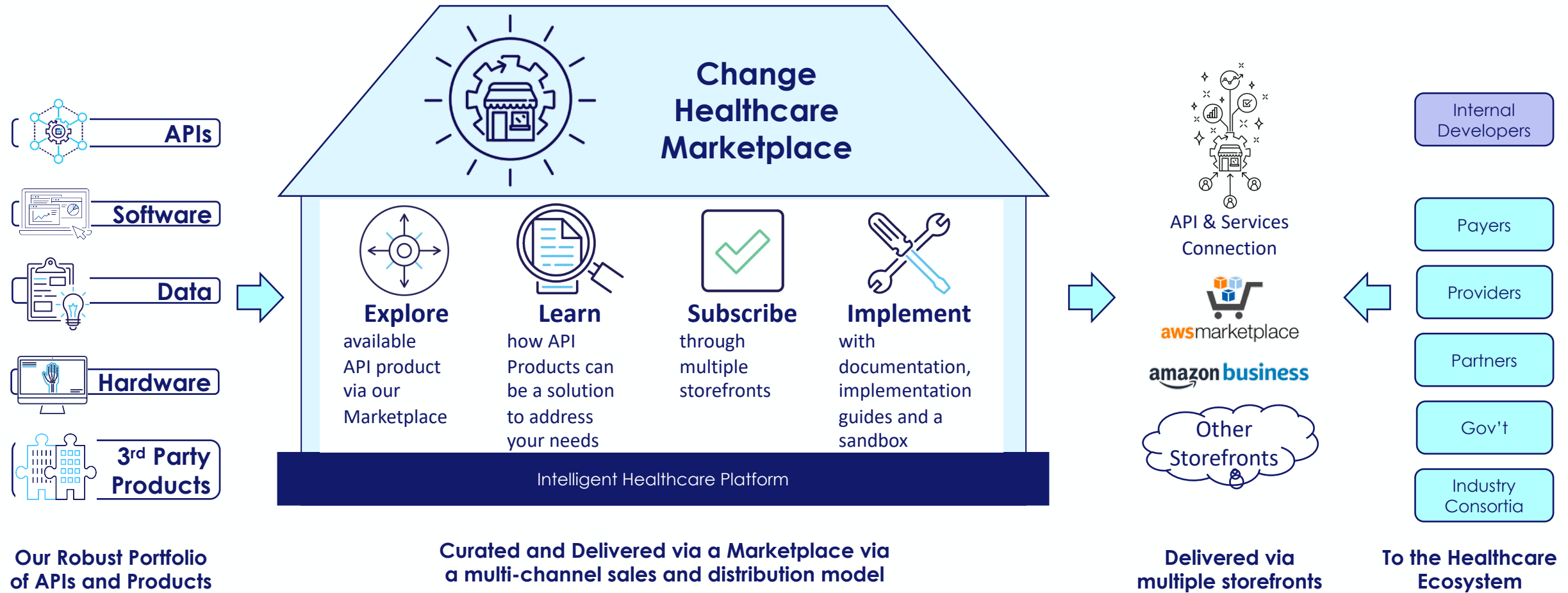


Next Gen Opportunities and Innovations

CHANGE
HEALTHCARE

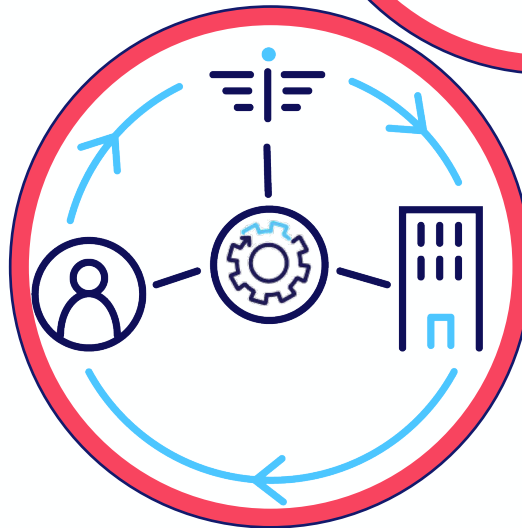
The Trusted Marketplace for the Healthcare Ecosystem

Increased access and reduced friction across the customer lifecycle speeds acquisition and retention; powering the network effect, increasing revenue and optimizing cost.

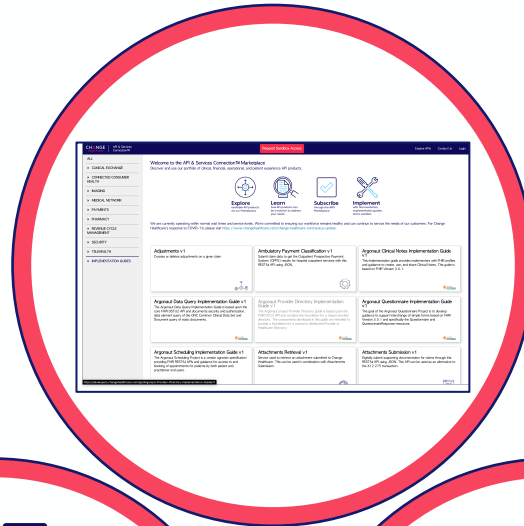


Why Partner with Change Healthcare

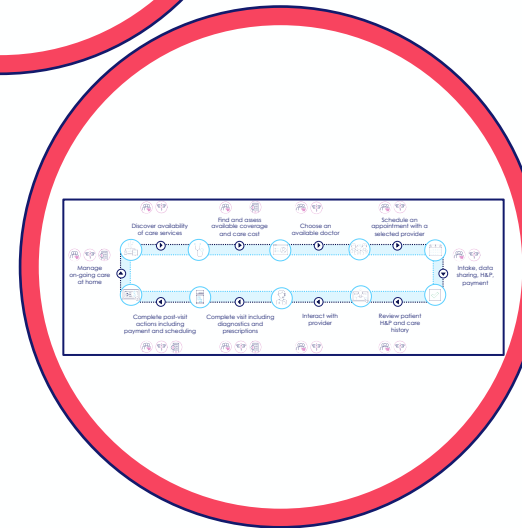
Market
Reach



Ecosystem
Empowerment



Product
Breadth



CHANGE HEALTHCARE